

- 17 +26'-6" NEUTRAL CYC
- 16 +26'-0" BLACKOUT DROP
- 15 +25'-6" OPEN

- 14 +23'-3" OPEN
- 13 +22'-0" #4 LEGS
- 12 +21'-0" #4 BORDER TRIM 22'-0"

- 11 +18'-6" #4 ELECTRIC TRIM 25'-0"

- 10 +16'-0" #3 LEGS
- 9 +15'-0" BACK TRAVELER
- 8A +14'-9" CYC
- 8 +14'-6" #3 BORDER TRIM 22'-0"

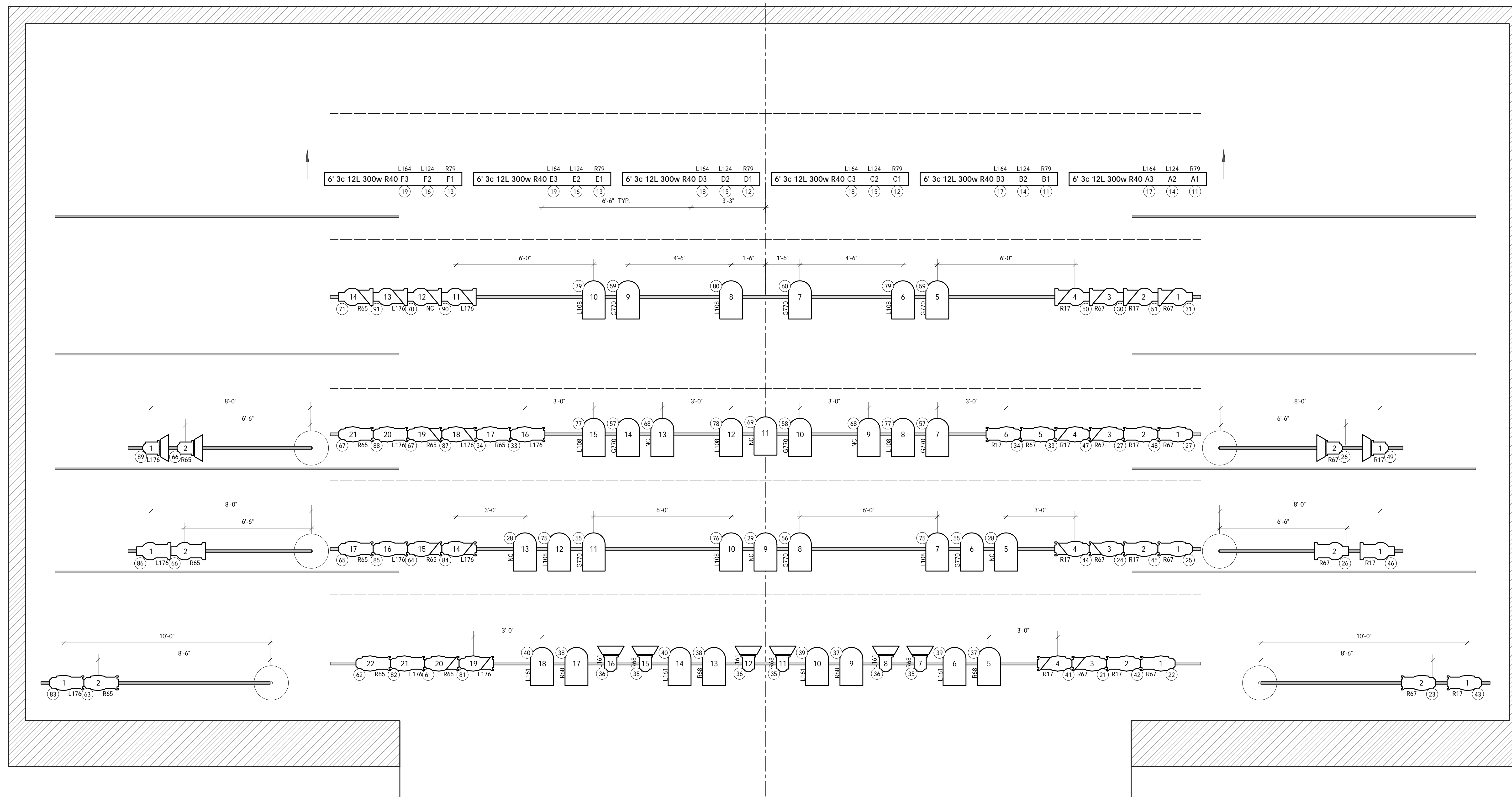
- 7 +12'-6" #3 ELECTRIC TRIM 24'-6"
- 6 +11'-0" #2 LEGS
- 5 +10'-6" #2 BORDER TRIM 22'-0"

- 4 +7'-6" #2 ELECTRIC TRIM 24'-6"
- 3 +6'-6" #1 LEGS
- 2 +5'-6" #1 BORDER TRIM 22'-6"

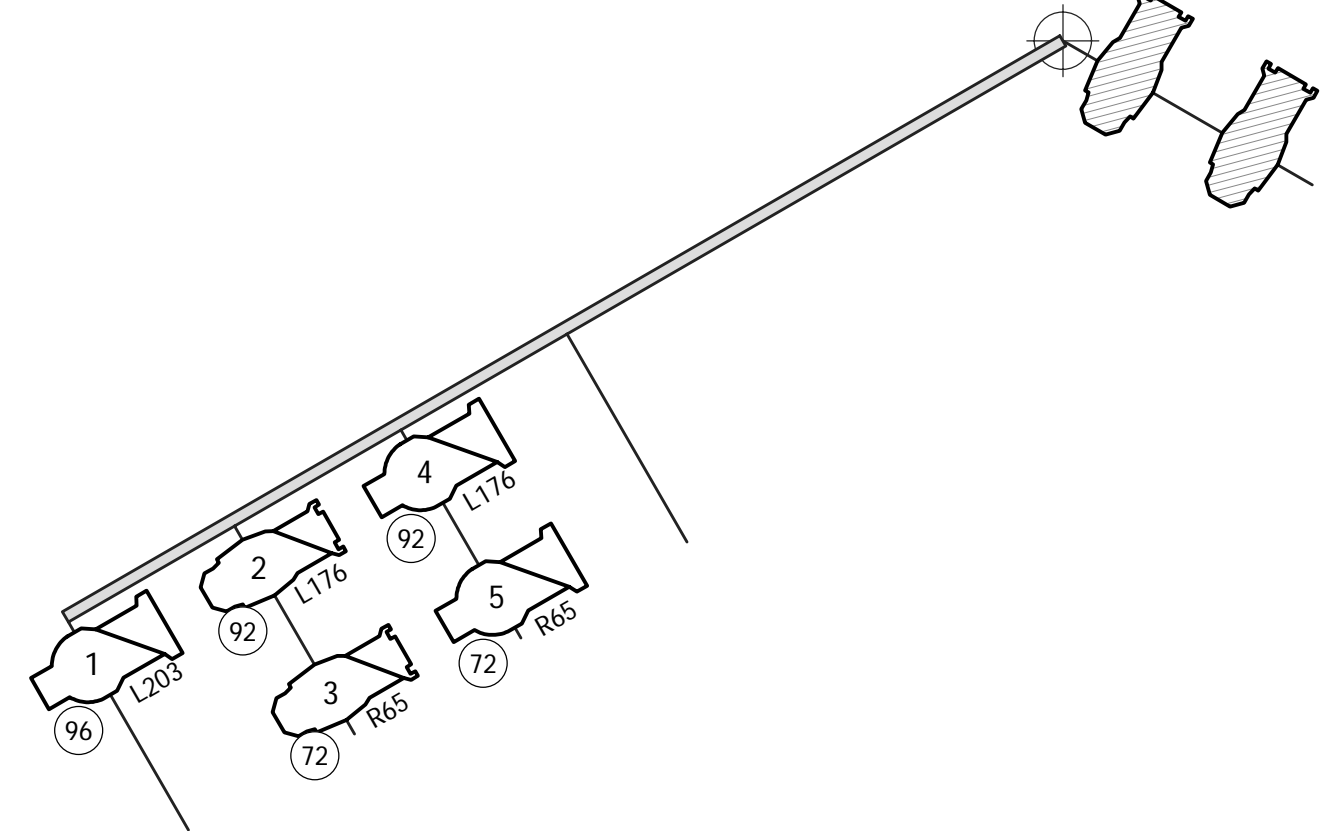
- 1 +2'-6" #1 ELECTRIC TRIM 20'-6"

HOUSE CURTAIN +1'-0" HOUSE CURTAIN (DEAD HUNG)
 HOUSE VALENCE +0'-6" HOUSE VALENCE TRIM 18'-0"
 LINE # DIST FR PL

NOTE: ALL TRIMS ARE FROM THE LENS OF THE FIXTURE



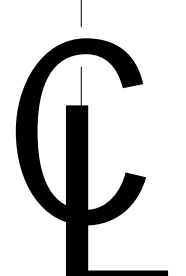
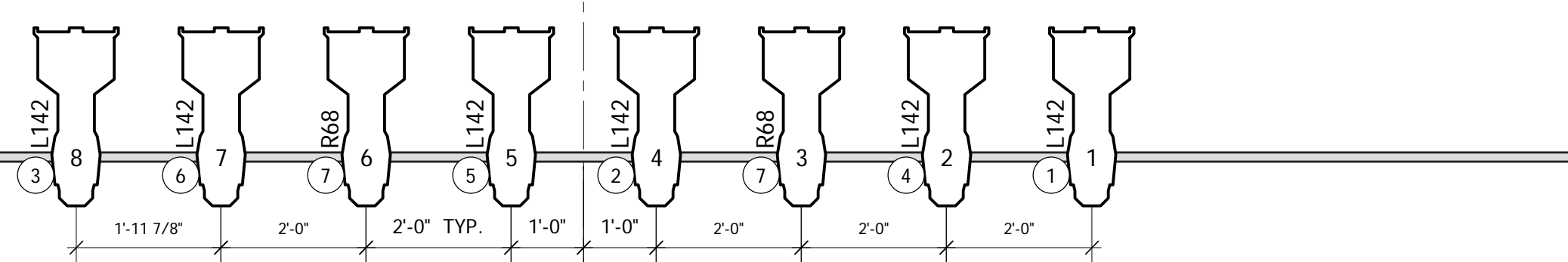
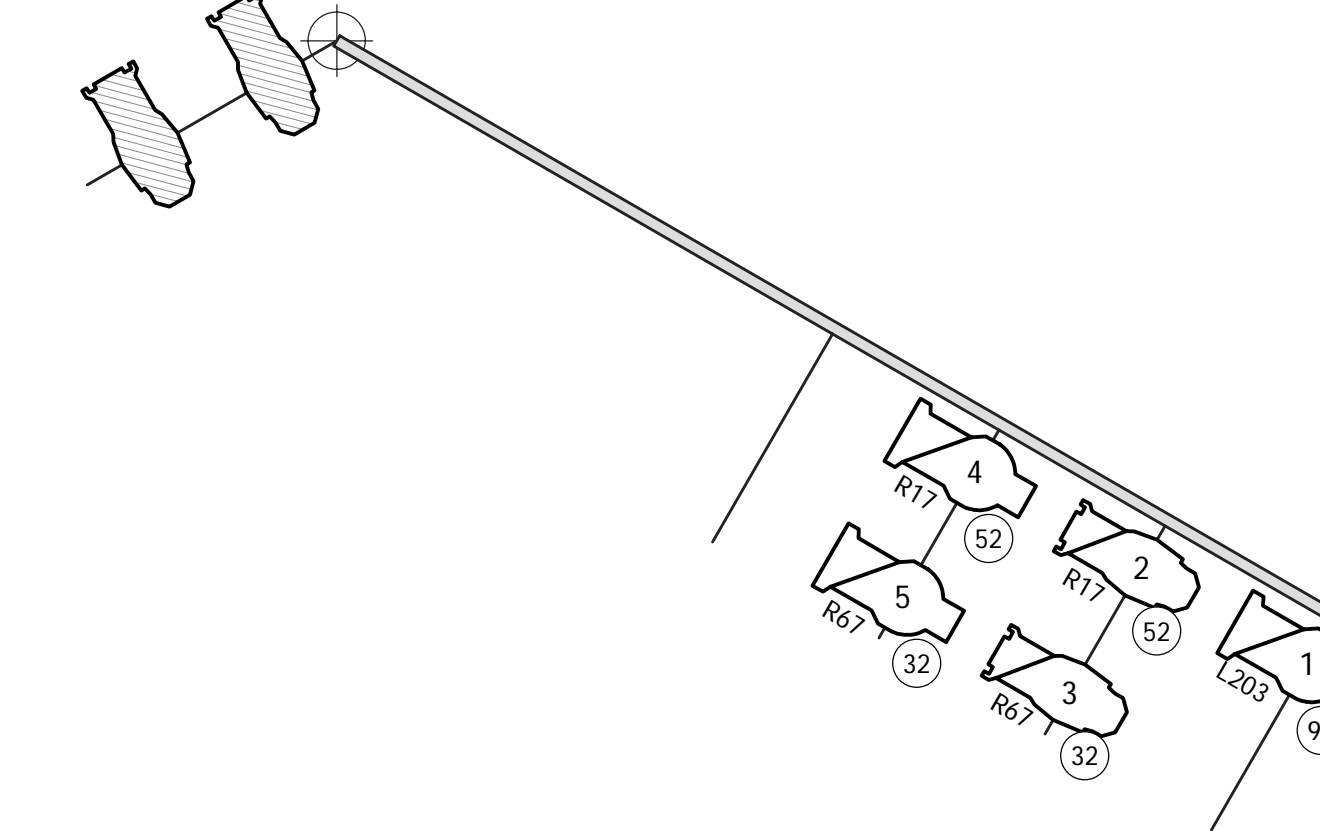
NEAR BOX BOOM R



Notes:
 ALL PAR AXIS ORIENTED SL-SR

ALL UNITS ON 18" CENTERS UNLESS OTHERWISE NOTED

NEAR BOX BOOM L



Instruments	
	10" Source 4
	26" Source 4
	36" Source 4
	6x12 Leko
	6x9 Leko
	6" 750w. Fres.
	PAR 64 MFL
	6" 3c 12L 300w R40
	6" 3c 12L 300w R40
Legend	
Unit Number	
Channel Color	



Barber of Seville

Lighting: JEFF DAVIS
 Direction & Scenery: John Pasco

1/2" GROUNDPLAN

BARRE OPERA HOUSE, BARRE, VT

SCALE 1/2" = 1'-0" DATE JUNE, 2006