

Brian W. Barnett
105 West Main Street #400
Vermont, Connecticut 06090
583.312.6302

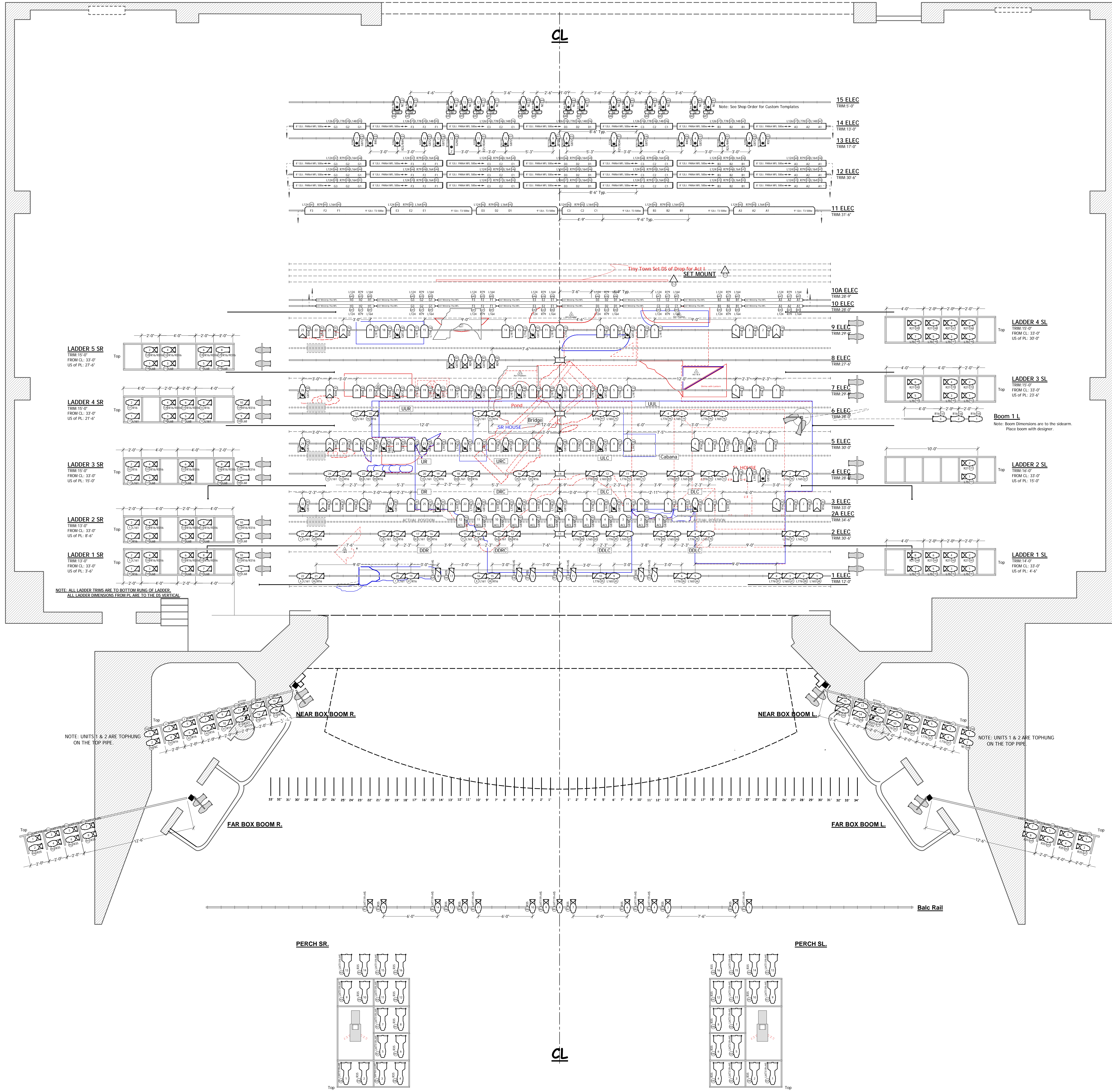
Notes:

- All Lights are on 18" centers unless otherwise noted.
- All trims are from the stage to the system pipe.
- All straightlights and scroller units should get heat shield.
- All Electrics get stiffeners.

S. L. Light Ladders	84
S. R. Light Ladders	83
58'-4"	B2 - Backout Drop
57'-0"	B1
57'-0"	15 Elec Truss 50'-0"
56'-4"	79
55'-0"	76
55'-0"	77
54'-4"	78 - 14 Elec Truss 130'-0"
53'-0"	75
53'-0"	74 - 13 Elec Truss 170'-0"
52'-4"	73
51'-0"	71
50'-4"	70
49'-0"	69
48'-0"	12 Elec Truss 30'-0"
48'-4"	67
47'-0"	66
47'-0"	65
46'-4"	64
45'-0"	63
45'-0"	11 Elec Truss 30'-0"
43'-0"	61
43'-1"	60
42'-5"	59
41'-0"	58
41'-1"	57
40'-5"	56
39'-0"	55
39'-1"	54 - POA Back Phase
38'-5"	53 - Saw Drop (TRD)
37'-0"	52 - Backout All Truss
37'-1"	51 - Backout All Truss
36'-5"	50
35'-0"	49
35'-1"	48 - 10A Elec Truss 28'-0"
34'-5"	47 - 10 Elec Truss 28'-0"
33'-0"	46 - 10 Back Row
33'-1"	45 - 10 Back Row
32'-5"	44
31'-0"	43 - 9 Elec Truss 28'-0"
31'-1"	42
30'-5"	41
29'-0"	40 - FOCUS TRACK
29'-1"	39
28'-5"	38 - 8 Elec Truss 27'-0"
27'-0"	37
27'-1"	36 - 14 Back Legs
26'-5"	35
25'-0"	34 - 14 Back Row
25'-1"	33 - 7 Elec Truss 26'-0"
24'-5"	32
23'-1"	31 - FOCUS TRACK
22'-6"	30 - 6 Elec Truss 25'-0"
21'-0"	29
21'-2"	28 - 13 Back Legs
20'-6"	27 - 13 Back Row
19'-0"	26 - 5 Elec Truss 30'-0"
19'-2"	25
18'-6"	24 - FOCUS TRACK
17'-0"	23
17'-2"	22
16'-6"	21 - 4 Elec Truss 28'-0"
15'-0"	20 - FOCUS TRACK
15'-2"	19
14'-6"	18 - 14 Back Legs
13'-0"	17 - 14 Back Row
13'-2"	16
12'-6"	15 - 3 Elec Truss 30'-0"
11'-0"	14
11'-2"	13 - 10A Elec Truss 34'-0"
10'-6"	12 - FOCUS TRACK
9'-0"	11 - 2 Elec Truss 30'-0"
9'-2"	10 - 2 Elec Truss 30'-0"
8'-6"	9
7'-0"	8 - 14 Back Legs
7'-2"	7 - 14 Back Row
6'-6"	6
5'-0"	5 - 10A Elec Truss 34'-0"
5'-2"	4
4'-6"	3 - 1 Elec Truss 28'-0"
3'-0"	2
3'-4"	1 - Panel 24'-0" High
Main Rig Line	2-10 - MAIN CURTAIN

Plaster Line 0'-0"

Note: All System Pipes are 60'-0" Long
Note: All Electric Trims are to the House Pipe



Key:

- 14 10, 17w
- 14 19, 15w
- 14 20, 17w
- 14 30, 17w
- 14 Zoom 15-30, 17w
- PAR64 ACL, 2000W/7A
- PAR64 MSP, 1000w
- PAR64 MFL, 1000w
- PAR64 MFL, 1000w
- Marphos Fader
- Practical
- Mini 10, 1000w

TYPICAL

- Template
- Colour
- Unit #
- Channel

Madama Butterfly
State Theatre Cleveland, Ohio

Lighting: Brian W. Barnett
Director:
Scenery:
ME:
RME:
ALD:
Drawn By: DMB
Revision Date: 4-18-2006
SCALE: 1/4"=1'-0"
REV: Plate:
Revision 1
4-18-2006