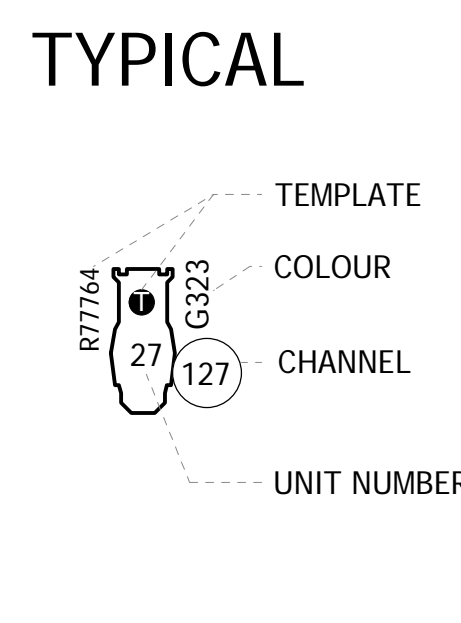
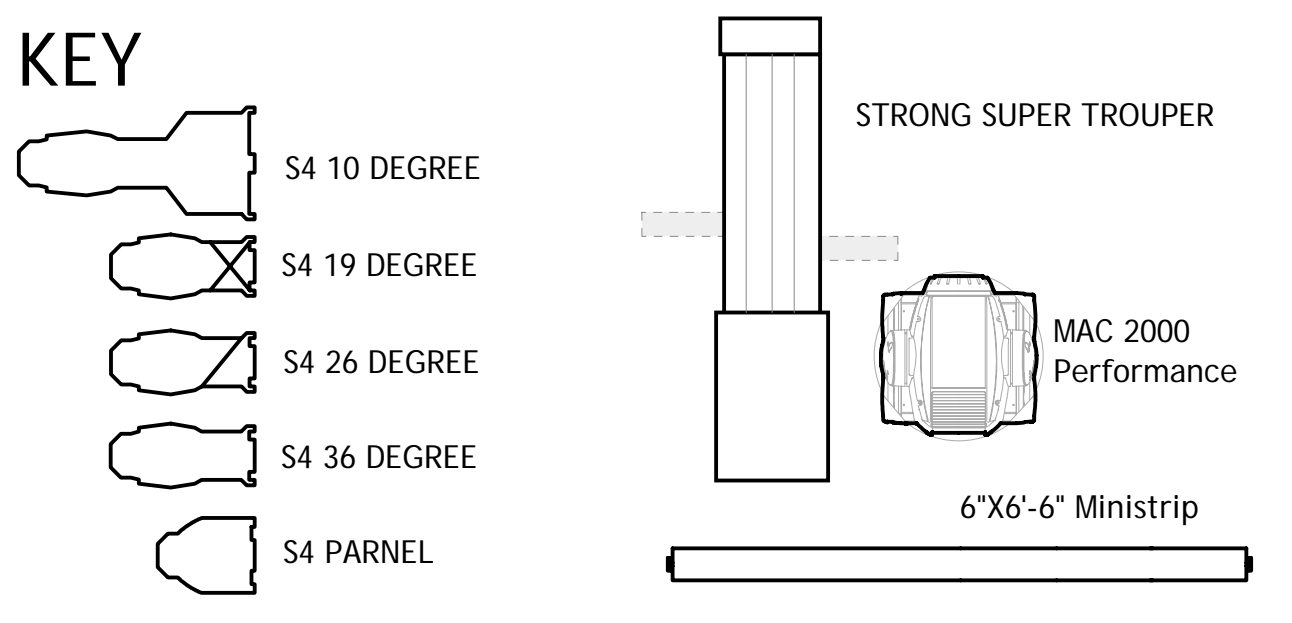
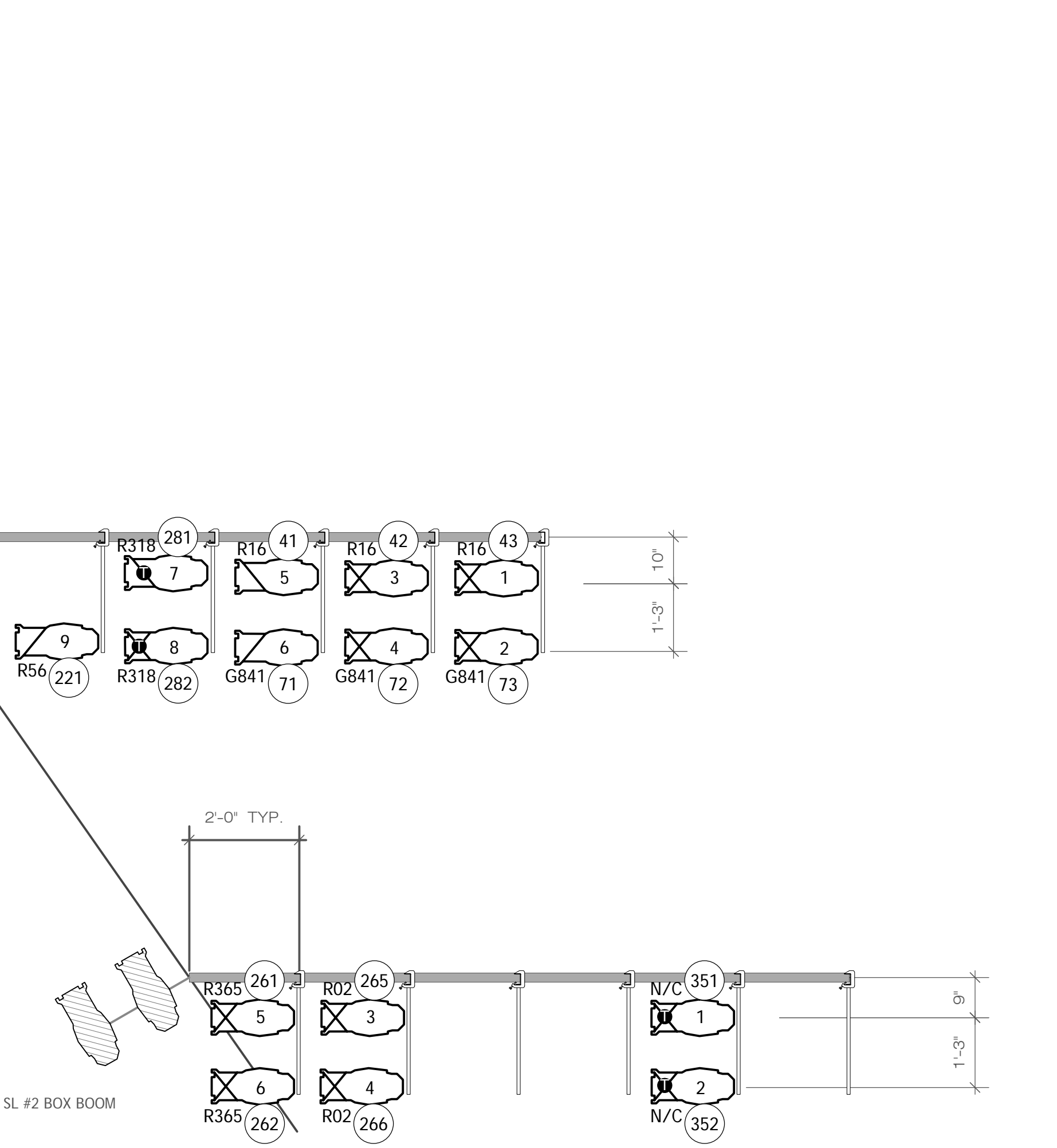
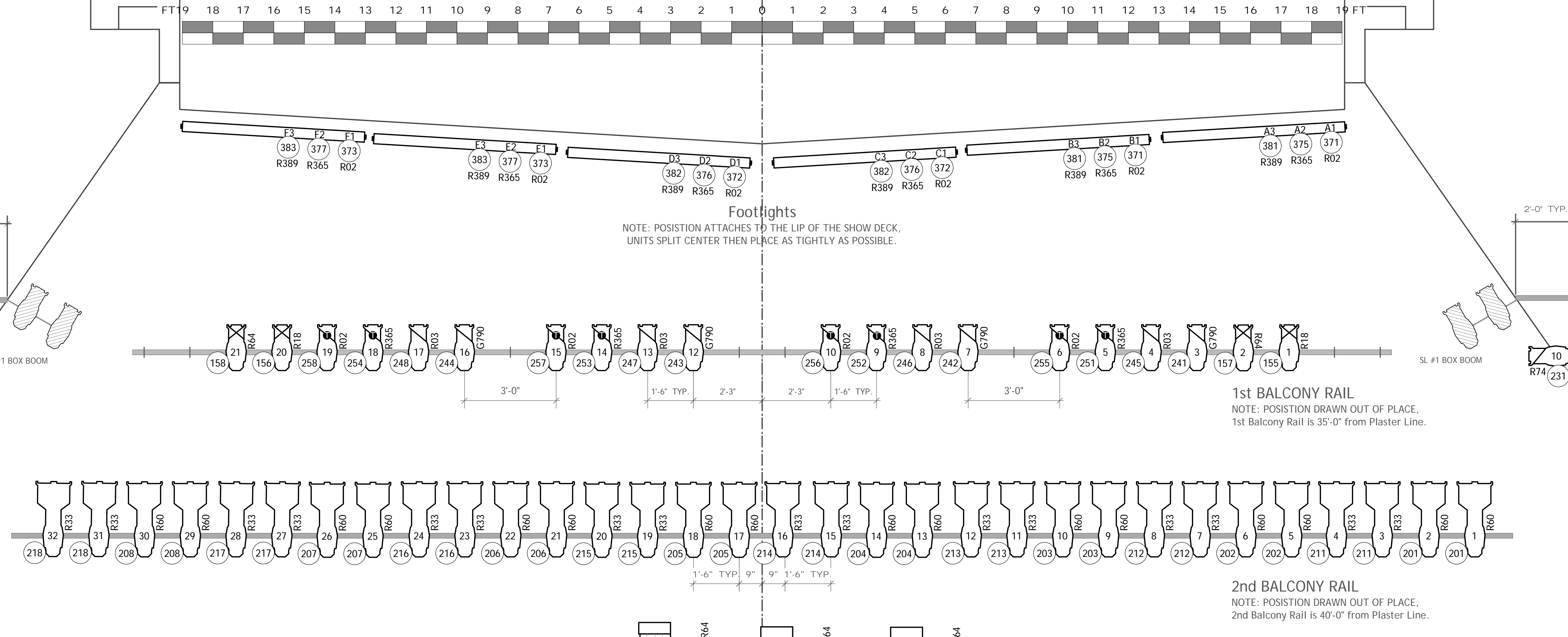
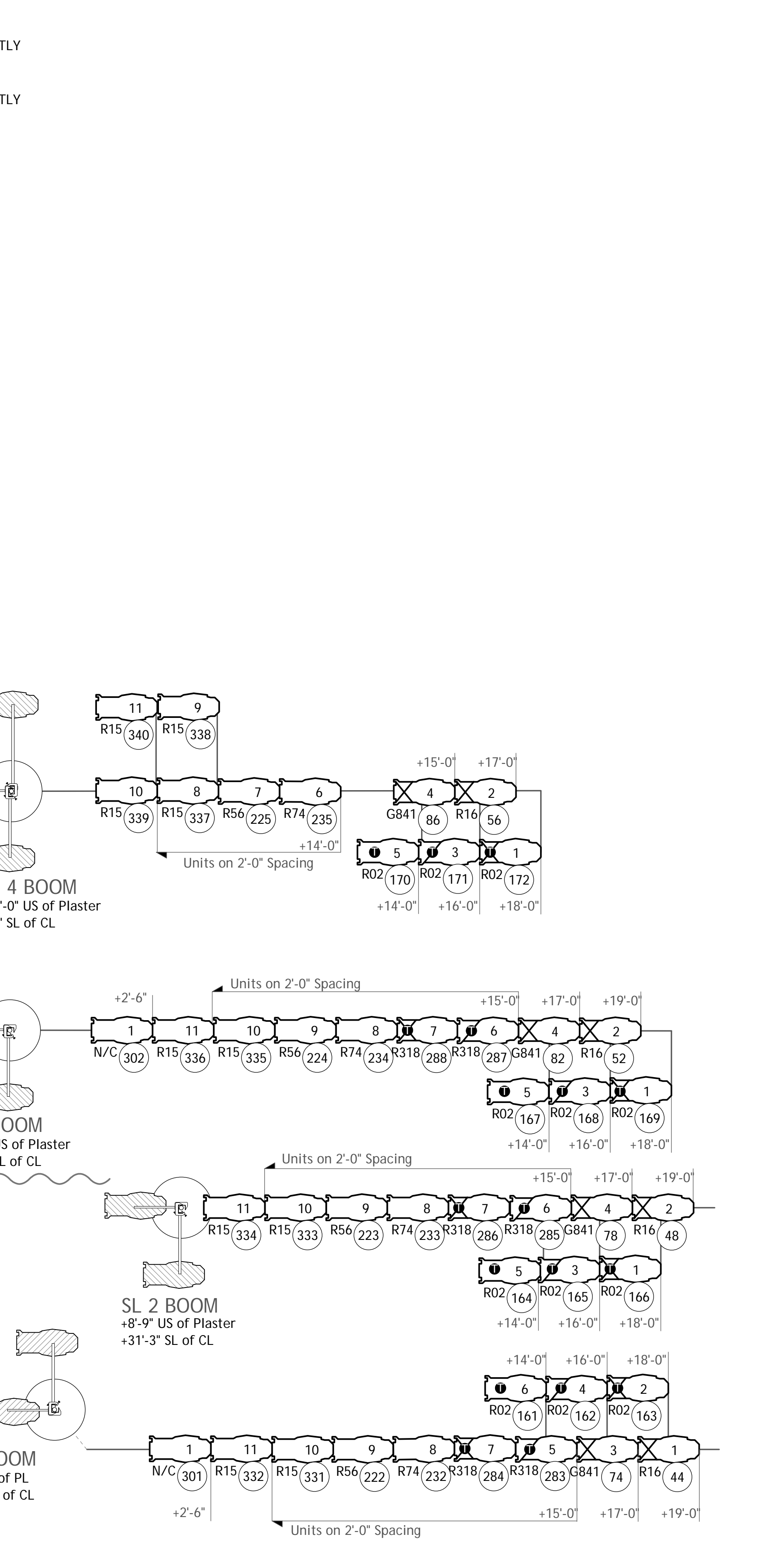
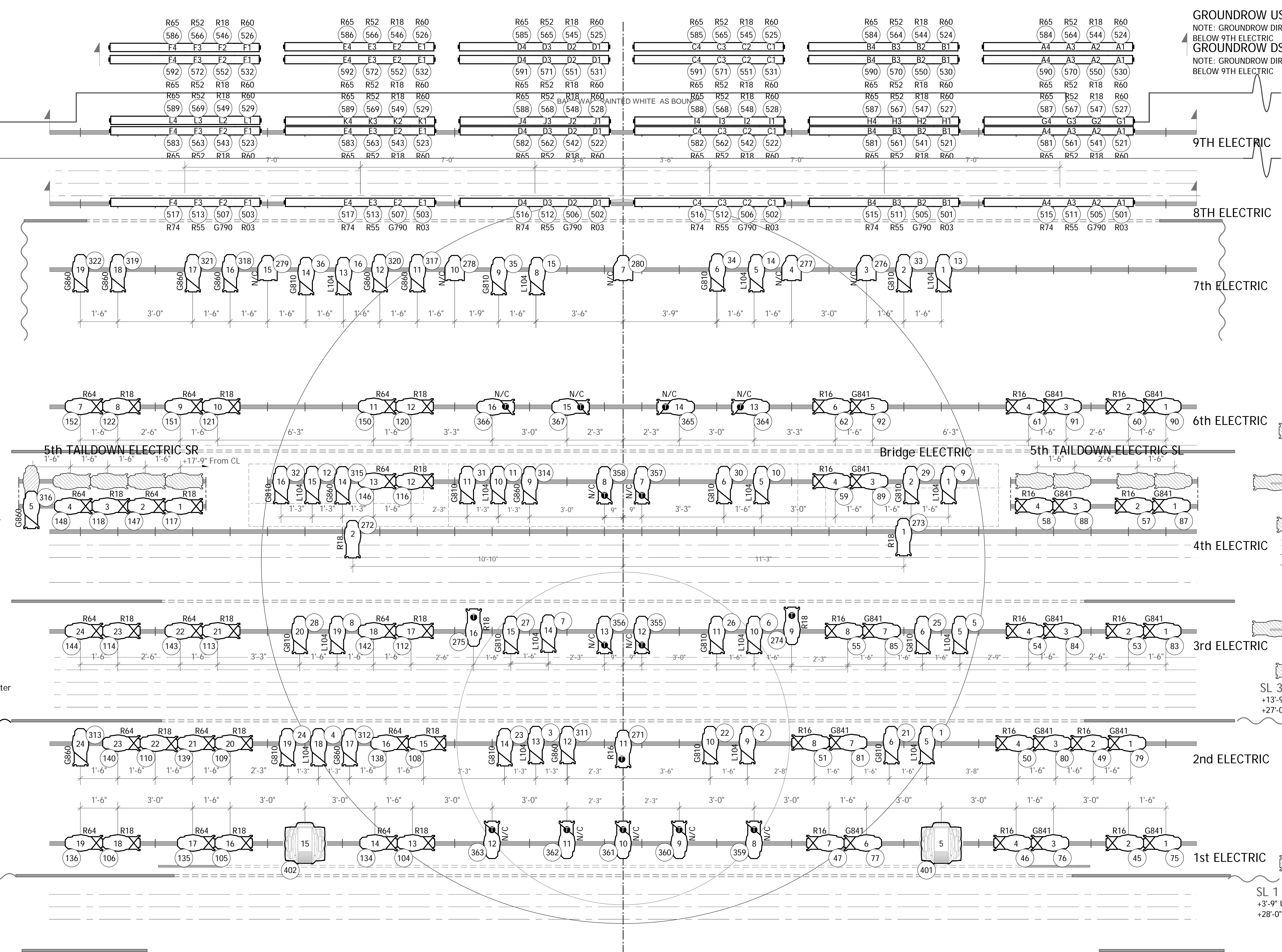


- 34'
- 33'
- 32'
- 31'
- 30'
- 29'
- 28'
- 27'
- 26'
- 25'
- 24'
- 23'
- 22'
- 21'
- 20'
- 19'
- 18'
- 17'
- 16'
- 15'
- 14'
- 13'
- 12'
- 11'
- 10'
- 9'
- 8'
- 7'
- 6'
- 5'
- 4'
- 3'
- 2'
- 1'
- 0'

ALL ELECTRICS TRIMS ARE LISTED FROM THE PIPE TO THE HOUSE DECK



Notes:
 1. All Trims are measured from the House Deck to the center of the pipe.
 2. Please drop all color and templates prior to focus.
 3. All Units are on 18" Centers unless otherwise noted.
 4. All boom dimensions are to the Sidearm.
 5. All Box Boom fixtures should have half hats.



Jeff Davis Productions Presents
Fiddler on the Roof
 Imperial Theatre
Electrics Hanging Plan

Brian W. Barnett 155 West Main Street #403 Vernon, Connecticut 06066 Home: 860.871.4996 Cell: 513.312.6302	Lighting By: Brian W. Barnett Lead Dog: Daisy Barnett Draftsman: B.W.B. & D.M.B.	Scale: 1/2"=1'-0" Drawn on: 3-13-2005 Printed On: 3-14-2005	Plate: 1 Of Two
--	--	---	---------------------------