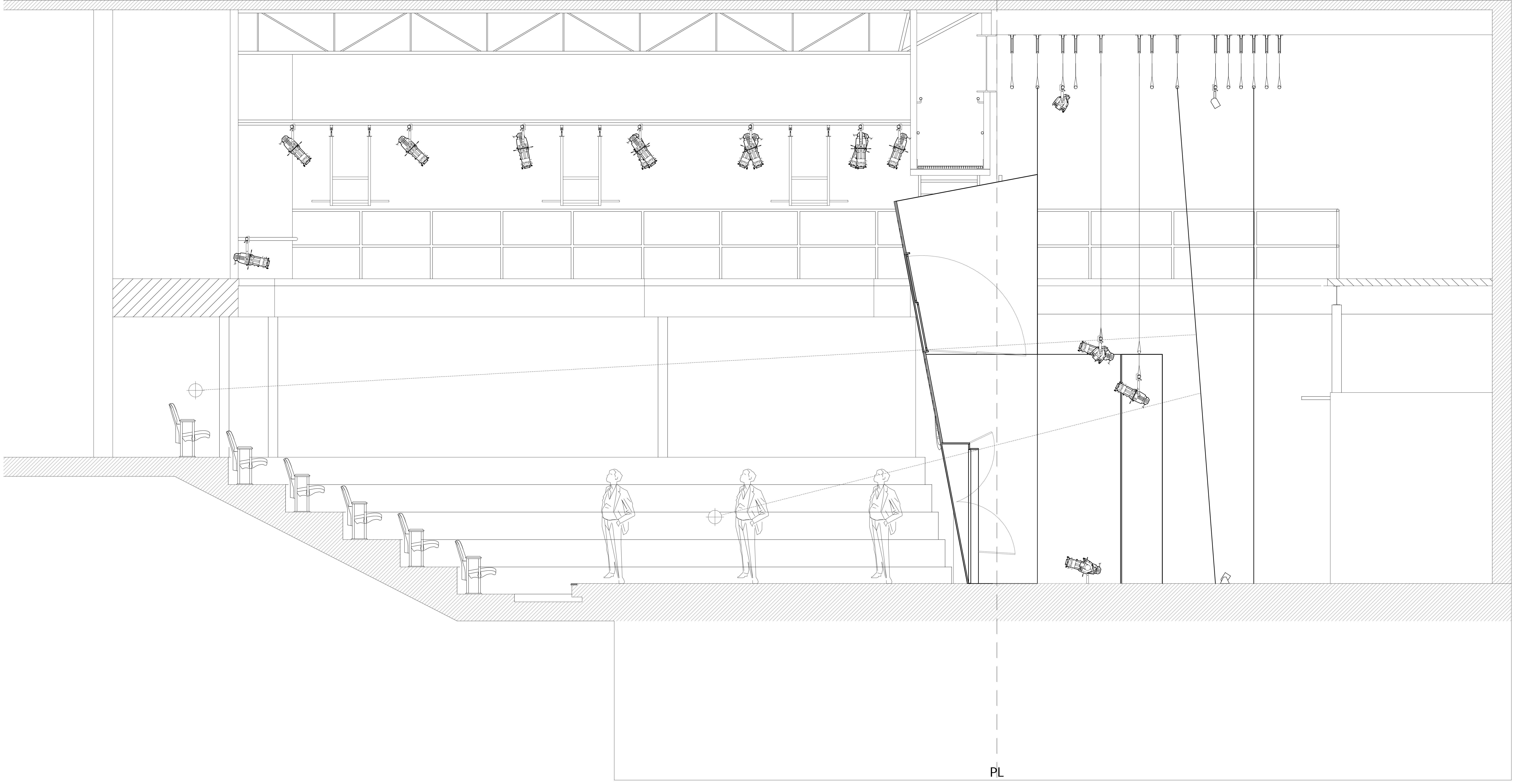


Brian W. Barnett  
155 West Main Street #203  
Waterbury, Connecticut 06896  
REVISIONS

**Notes:**  
- All Lights are on 18" centers unless otherwise noted.  
- All trims are from the stage to the system pipe.  
- All straightlights and scissor units should get heat shield.

→+11'-7 7/8"	WINDOW RIGGING 1
→-2'-3 7/8"	LEGS 2
→-3'-7 7/8"	ELECTRIC 1 Trim -26.0'
→-4'-3 7/8"	..... 4
→-5'-7 7/8"	ELECTRIC 2 Trim -12.0'
→-7'-7 7/8"	ELECTRIC 3 Trim -10.0'
→-8'-3 7/8"	..... 7
→-9'-7 7/8"	BLACK SCRIM 8
→+11'-7 7/8"	ELECTRIC 4 Trim -26.0'
→+12'-3 7/8"	..... 10
→+12'-11 7/8"	..... 11
→+13'-7 7/8"	WHITE CYC 12
→+14'-3 7/8"	..... 13
→+14'-11 7/8"	..... 14
	DIST FROM P.L.
	LOAD
	LINESET #



**Key:**

- S4 19 575w
- S4 26 575w
- S4 36 575w
- S4 50 575w
- S4 PAR WFL 575w
- S4 PAR MFL 575w
- MAC 2K 2000w
- MAC 550 400w
- 8' MiniStrip w/ Box Flood
- MiniStrip
- EFX
- LeMaire G300 Fogger
- DF50
- DF50 Hazer
- 7.5' Barndoor

**TYPICAL**

Connecticut Repertory Theatre  
**Prudence**  
Lighting Section  
Nate Katter Theatre

Lighting: Brian W. Barnett  
Director: Tyler Marchant  
Designer: Brett McCormick  
ME: Lauren Olyn  
RME: Erik Mason  
AD: Brad Schomer & Amber Lacher  
Drawn By: DBB  
Revision Date: 2-24-2006  
SCALE: 1/2"=1'-0"

REV	Final	Date	2-24-2006
		Page	2