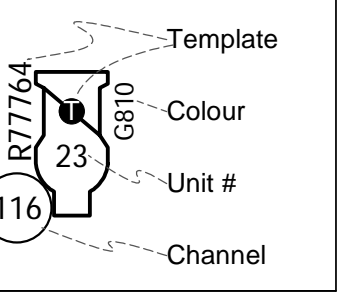


Brian W. Barnett
155 West Main Street #403
Vernon, Connecticut 06066
518.322.6302

Key:

- 6x12 750w (22)
- 6x9 500w (55)
- 4.5x6 500w (9)
- 6' Fresnel (14)
- Par 64 MFL (18)
- Par 16 WFL (12)
- Practical (7)
- MAC 2K (2)
- Ministrup (2)
- 6' R40 Striplight (12 Lamp 4 Circuit) (6)

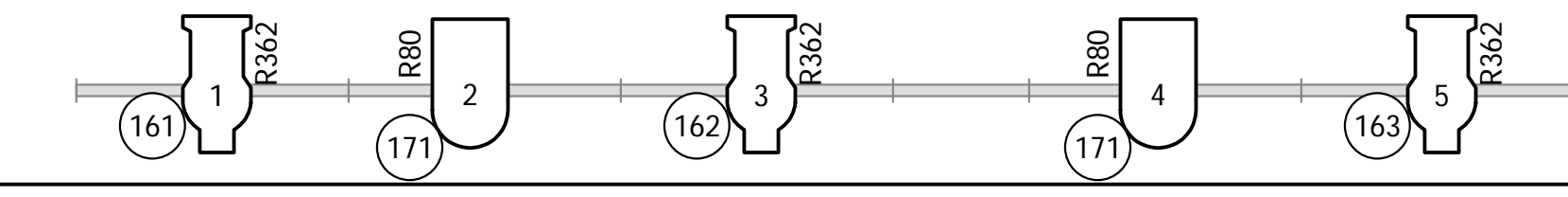
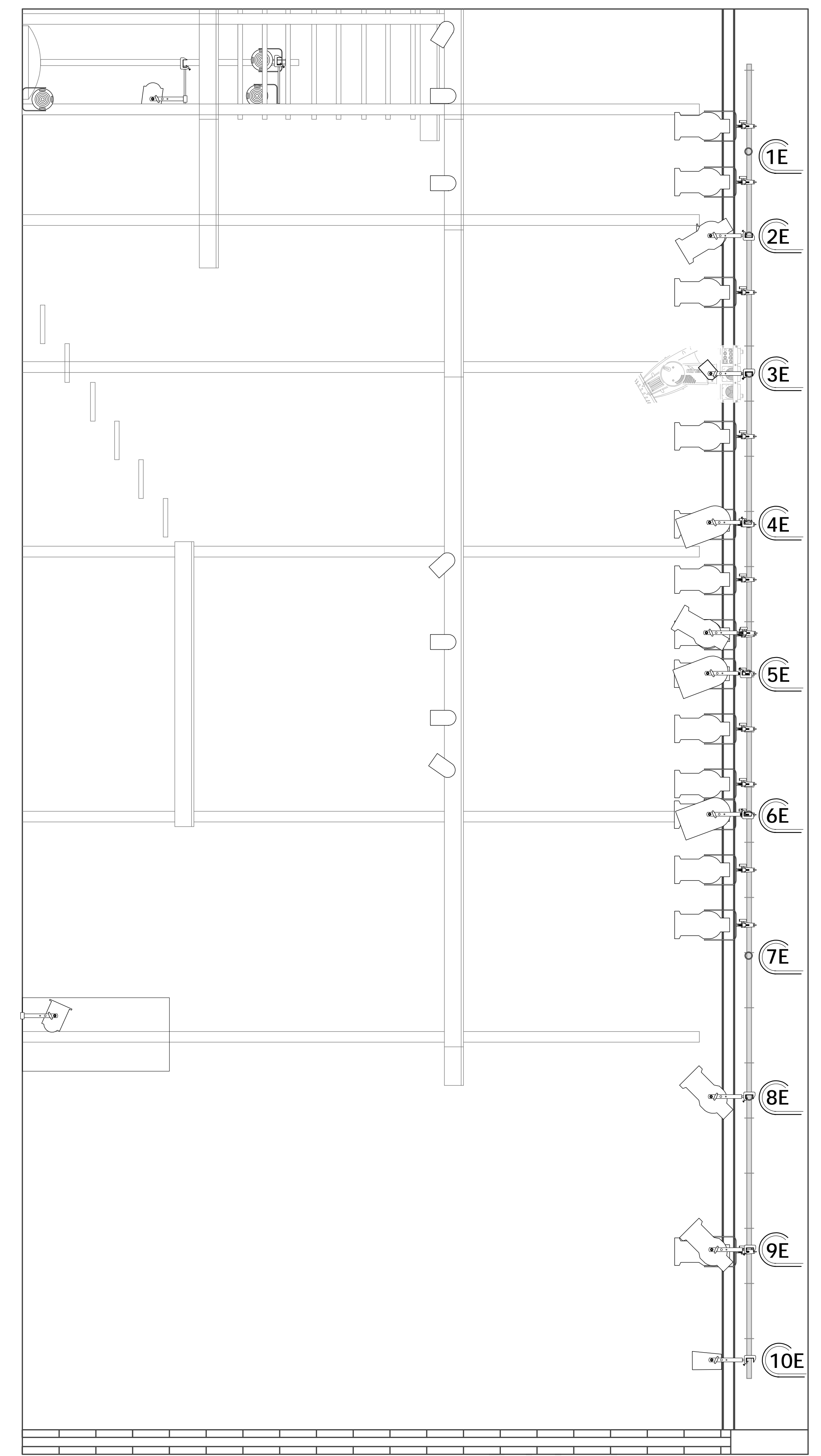
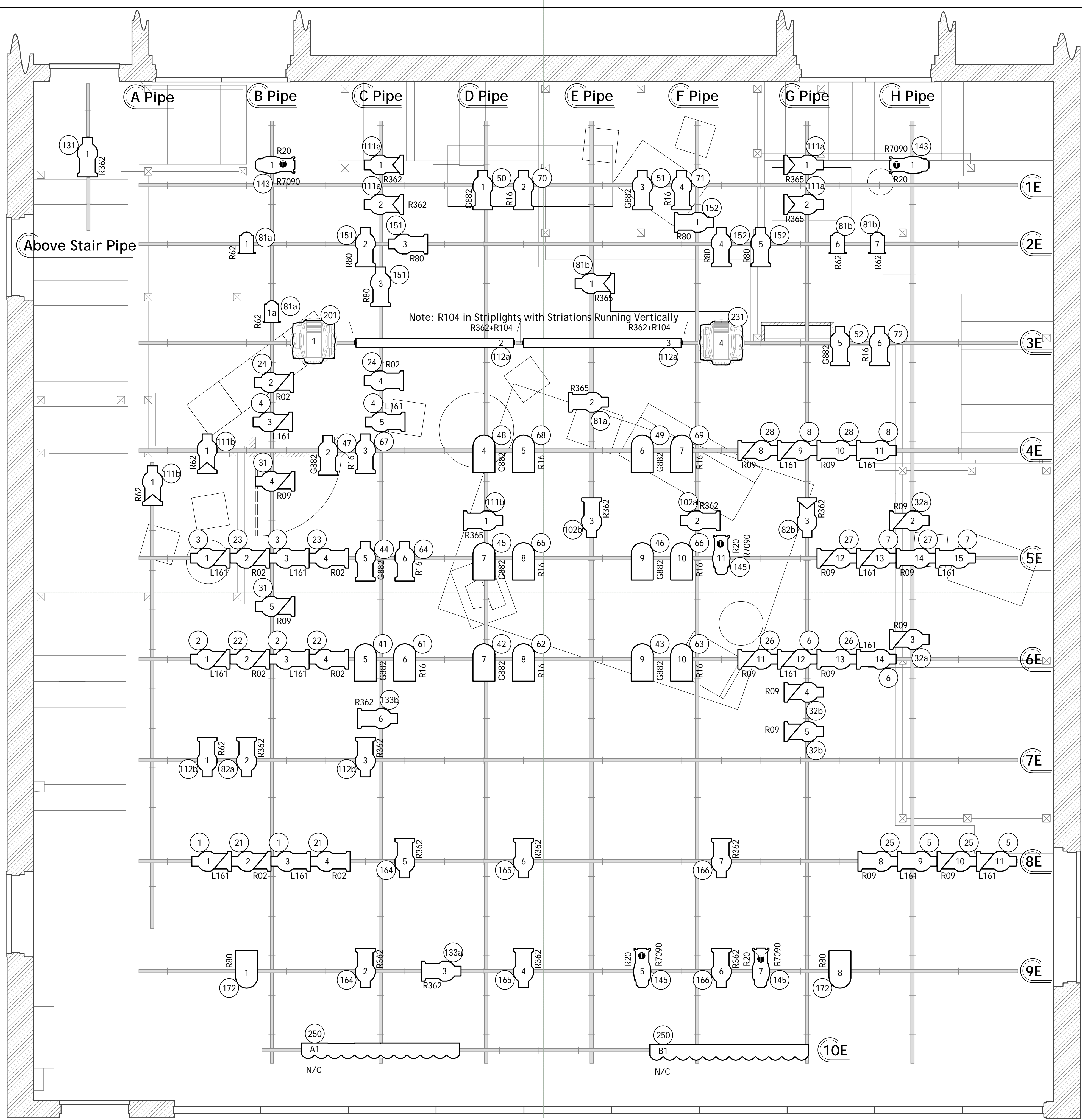
TYPICAL



University of Connecticut, Department of Dramatic Arts
Stop Kiss
LX Plan and Sections
Mobius Theatre

Lighting: Brian W. Barnett
Director: Bob McDonald
Scenery: Jung Ae Yoo
ME: Kirk Matson
ALD: Art Whaley
Revision Date: 10-13-2005
SCALE: 1/2"=1'-0"

REV: Revision 3 10-13-2005
DATE: 1
OF TWO



Studio Electric 1
@3'-0" FROM AIRWALL, OR ON CLOSEST AVAILABLE SYSTEM PIPE (STUDIO LINESET 13)
TRIM @ HIGHEST POSSIBLE TRIM

Note: All Units on 18" Centers Unless Noted Otherwise.